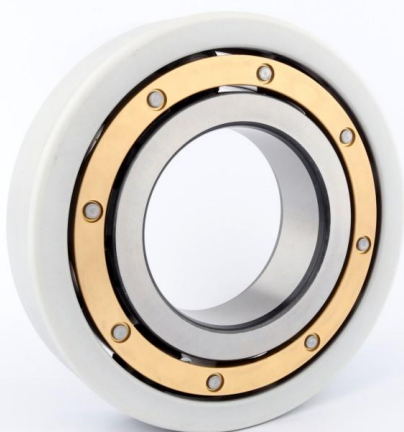




Sweet Bearing Co., Ltd.

SWTG Bearings, A Trusted Choice Globally.



Sweet Bearing Co., Ltd. is an enterprise integrating production and trade. The company is located in the Bearing Industrial Park in Linqing City, Shandong Province, the largest bearing base in China.



**More Than Just Bearings,
It's a Commitment
and Responsibility.**

The company has advanced production equipment and complete testing instruments. The company specializes in the production of metric and inch tapered roller bearings, deep groove ball bearings and automobile wheel hub bearings, etc. The products strictly implement the ISO9001 quality management system standard. The company has registered the trademark "SWTG". SWTG bearings have been sold all over the world and replaced some imported products. Sweet Group has established long-term cooperative relations with customers from more than 100 countries including Russia, Ukraine, Poland, Kuwait, Saudi Arabia, Bangladesh, India, United Arab Emirates, Chile, Brazil, Malaysia, Indonesia, Singapore, Philippines and Vietnam.

Quality first and dedicated service are our consistent business principles. At the same time, we also adhere to the belief of product innovation, management innovation and service innovation. We adhere to the principle of people-oriented and honest cooperation. Over the past 20 years, countless customers have visited the factory and talked with us face to face, which has promoted solid and long-term cooperation again and again.

DEEP GROOVE BALL BEARINGS



Product Features	Product specification	Structure and Desig	Main Applications
<p>This series of bearings mainly bear radial load with limit axial load. Low running resistance with high rotational speed limit, high rotation precision with low noise and vibration.</p>	<p>Inner diameter range: 10mm ~ 1320mm Outer diameter range: 30mm ~ 1600mm Width size range: 9mm ~ 300mm</p>	<p>General purpose and thin-wall series (6000; 6200; 6300; 6400; 61700; 61800; 61900), miniature series, British 1600 series, British R series</p>	<p>Motor Motor, general industrial machinery, gear box, pump industry, agricultural machinery, automobile, etc</p>

TAPERED ROLLER BEARINGS



Product Features	Product specification	Structure and Design	Main Applications
<p>The inner and outer rings are conical raceways, which can bear the combined radial and unidirectional axial loads and need to be used in pairs. High radial/axial load capacity, separable design for easy installation; Contact Angle 10-30°, need to pre-tighten adjust the clearance.</p>	<p>Single-row tapered roller bearings, inner diameter 2mm to 1270mm, outer diameter 4mm-1465mm, width 15mm-240mm; Double row tapered roller bearing, inner diameter 3.8mm-1560mm, outer diameter 7mm-1800mm, width 5mm-460mm.</p>	<p>Product Series: 30200, 30300, 31300, 32000, 32200, 32300, 333000, 33100, 33200</p>	<p>Shaft of large machine tool, wheel shaft box, large reducer, rolling mill, support roller and work roller.</p>

CYLINDRICAL ROLLER BEARINGS



Product Features	Product specification	Structure and Design	Main Applications
<p>Roller and raceway for line contact, high radial bearing capacity, suitable for high-speed heavy load, part of the structure allows axial displacement. The roller end face is in sliding contact with the rib, and copper alloy solid cage is used. Split design for easy maintenance.</p>	<p>Single row (inside diameter 10-500mm), double row (inside diameter 50-800mm), full roller (without cage)</p>	<p>It is divided into single column (design deformation N, NJ, NU and NUP) and double column (design deformation NN and NNU). Cage type: Brass (M), polyamide (TVP3) and stamped steel (J)</p>	<p>Transmissions for industrial transmission boxes, electronic motors, pumps and compressors, traction motors and railway cars, steel works, etc.</p>

SPHERICAL ROLLER BEARING



Product Features	Product specification	Structure and Desig	Main Applications
Spherical roller bearings are non-separated, with single or double row radial bearings, providing a double-sided sealing structure	Inner diameter range: 20mm ~ 1800mm Outer diameter range: 50mm ~ 2000mm Width size range: 9mm ~ 300mm	Double column: 21300, 22200, 22300, 23000, 23100, 23200, 23900, 24000, 24100 Single column: 20200; 20300 CA/CAC CC(J)/ CJ CCJA/ EJA CAF CA ECA/ECAC ECAF CAFA	Heavy machinery (such as construction, mining and lifting machinery); Rolling mill; Gear box, vibrating screen, etc
	CCJA		BS2

ANGULAR CONTACT BALL BEARING



Product Features	Product specification	Structure and Design	Main Applications
High-precision and high-speed bearings usually take 15° contact Angle (type C), the larger the contact Angle, the higher the axial bearing capacity, such as 25° contact Angle (type AC) and 40° contact Angle (type B) can be used.	The pairing form is DB(back-to-back); DF(face-to-face); DT(series); UA(Universal);The cage has nylon (TVP); Stamping steel protection (J); Copper protection (M) and high strength fiber (TPA) for selection;Provide a variety of sealing rings; Dust cover and lubricant are available.	Single column - 7000; 7200; 7300; Double column - 3200; 3300; 5200; 5300	Pump industry; Reduction gear box, agricultural machinery, woodworking machinery, etc

ALIGNING BALL BEARINGS



Product Features	Product specification	Structure and Desig	Main Applications
Double row spherical roller, the outer ring is spherical raceway, the aligning ability is stronger (aligning Angle up to 5°), but the bearing capacity is lower than that of aligning roller bearings.	Cage with stamping steel protection; Nylon; Copper for choice; Provide a variety of sealing rings; Dust cover and lubricant are available.	1200; 1300; 2200; 2300; Conical holes (suffix K) and matching tight sets are available.	Agricultural machinery; Textile machinery; Chemical machinery, etc.

THRUST BALL BEARING



Product Features	Product specification	Structure and Desig	Main Applications
Designed to withstand axial loads, one-way and bidirectional structure, not suitable for radial loads.	Cage with stamping steel protection; Nylon; Copper for choice; Provide a variety of sealing rings; Dust cover and lubricant are available.	Unidirectional thrust ball bearings: 51 200 series, 51 300 series, 51 400 series; Two-way thrust ball bearings: 54200 series , 522 and 523 series	High pressure cleaning machine; Pump industry; Lawn mower; Vertical axis, etc.

KNUCKLE BEARING



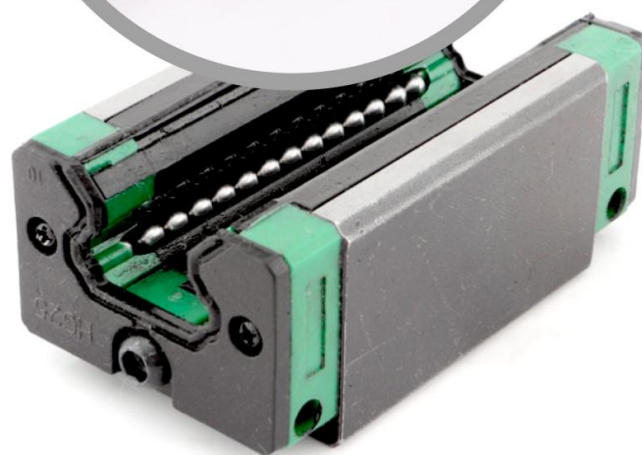
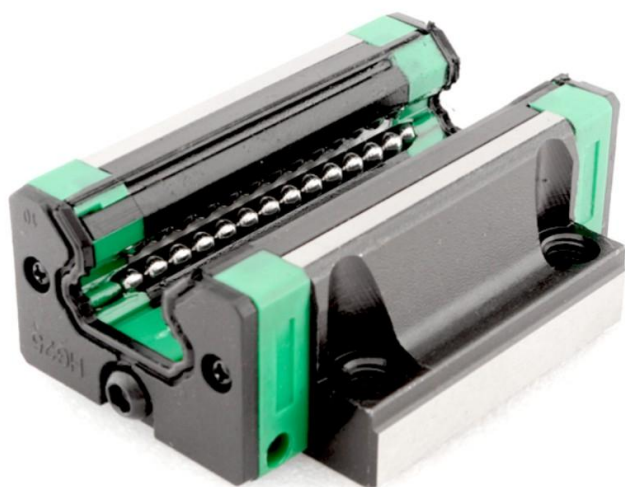
Product Features	Product specification	Structure and Design	Main Applications
Sliding contact bearings, consisting of a spherical sliding surface, allow swinging and rotating motion.	Inner diameter 6-300mm, swing Angle 15°-40°	GE ... ES series, GEG... ES series, GEG... ES series, GE... UK/GE ... FW Series, GE... UK/GE ... FW Series, GEBK... S Series, GEBK... S Series, GEG... UK series.	Automotive field, aerospace, industrial machinery, agricultural machinery, new energy vehicles, humanoid robots, wind power equipment, etc.

OUTER SPHERICAL BEARING SEAT



Product Features	Product specification	Structure and Design	Main Applications
An assembly that integrates the bearing and the seat with a spherical outer ring for easy aligning, usually sealed and pre-lubricated. Ready-to-use, easy to adjust; Anti-pollution, suitable for open environment. The outer ring has a stop slot, and the axial positioning is simple.	Inside diameter (aperture) : usually from 12mm to 100mm, suitable for different sizes of shaft.	Prefix: UC (standard), UK (enhanced); Suffix: P (dust cover), A (lubrication hole), C (ring seat), FS (convex square seat), PH (high center seat), FB (suspension seat)	Conveyor belt rollers, agricultural machinery transmission parts, packaging equipment, etc.

LINEAR GUIDE SLIDE BLOCK



Product Features	Product specification	Structure and Desig	Main Applications
Linear motion system, consisting of guide rails and sliders, rolling in cycles with balls or rollers. High precision linear motion, low friction coefficient (0.001-0.003); Adjustable preload, high stiffness. Repeated positioning accuracy $\pm 2\mu\text{m}$.	Prefix: HGW (ball type), HGR (roller type); Suffix: C (lengthening slider), Z (dust cover)	Japan THK, Taiwan HIWIN, Taiwan T-WIN, Taiwan Intime PMI, Germany REXROTH, Japan NSK, Taiwan CPC, Taiwan TBI	Automation equipment, CNC machine tools, industrial robots, medical equipment, semiconductor manufacturing equipment, printing machinery, etc.

INSULATED BEARING



Product Features	Product specification	Structure and Desig	Main Applications
Ceramic coating or alumina film insulation to prevent electrical corrosion through the current. Block shaft current (resistance > 100MΩ), extend motor life; High temperature resistance (coating can withstand 300℃). The base material is bearing steel or stainless steel.	Inner diameter range: 40mm ~ 140mm Outer diameter range: 80mm ~ 300mm Width range: 18mm ~ 62mm	Plasma sprayed alumina or zirconia coating, uniform thickness; Insulation layer withstand voltage > 1000V, does not affect the bearing clearance.	Electric motors and generators, wind turbines, railway industry, industrial pumps and compressors.

INSULATED BEARING



Product Features	Product specification	Structure and Desig	Main Applications
<p>The ring and rolling body are made of stainless steel , which is highly resistant to corrosion. Acid and alkali corrosion resistance, suitable for humid/chemical environment; Hardness HRC58-62, lower than steel bearing but excellent rust resistance.</p>	<p>Inner diameter 3-100mm, accuracy level ABEC1-5Stainless steel deep groove ball bearing, stainless steel angular contact ball bearing, stainless steel thrust ball bearing, stainless steel outer spherical bearing, stainless steel bearing seat</p>	<p>Stainless steel bearings are: 440C material, 420 material, 304 material, 316 material, 316L material Prefix: S (stainless steel); Suffix: SS (all stainless steel), RS (rubber seal)</p>	<p>Stainless steel bearings are widely used in food processing, medical equipment, chemical industry, Marine engineering and other fields with high requirements for material corrosion resistance</p>

INSULATED BEARING



Product Features	Product specification	Structure and Design	Main Applications
Support unlimited linear motion, the ball in the shaft and sleeve cycle rolling. The inner wall of the sleeve has multiple raceways, and the ball circulates through the reversing device; Open mouth is easy to install, closed need to use a cage.	The inner diameter of a linear bearing refers to the part that is matched with the shaft, that is, the diameter inside the bearing. Common linear bearing diameter ranges from about 3mm to 100mm.	Standard linear bearings (LM series), flanged linear bearings (LMF, LMK series, etc.), open linear bearings (LMK series), long linear bearings (LMH series), linear bearings for special environments (LMH series)	Automation equipment, numerical control machine tools (CNC), industrial robots, medical equipment, semiconductor manufacturing equipment, printing machinery, office equipment